



# **EFG C20-C40** **Electric Cushion** **Tire Lift Trucks**

4,000 – 8,000 lbs. capacity

 **JUNGHEINRICH®**

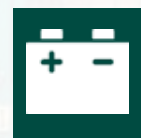



# Innovation. You Can Drive.


The Jungheinrich® EFG C20-C40 models of sit-down electric counterbalanced lift trucks are an ideal material handling solution for a wide range of industrial applications.


Whether you are shuttling goods, loading and unloading trailers or moving large loads from dock to stock, the EFG C20-C40 runs longer without sacrificing performance. Available in 4,000 – 8,000 lb. capacities, these 36 and 48-V AC lift trucks set the industry standard — reaching lift heights of up to 312 inches.


### Benefits


- 

Highly efficient for long run times
- 

High Lift Heights Up To 312"
- 

Excellent Visibility
- 

Exceptional Operator Comfort
- 

500+Hour Service Intervals
- 

Optimized Control Systems





# Exceptional Run-times. More Productivity.

## Introducing a new generation of warehouse products

The EFG C20-C40 models of sit-down counterbalanced lift trucks take your operation to a higher level, thanks to their excellent performance and high efficiency. Never settle for stopping a shift to re-charge your lift trucks.

## How do we do it?

The pioneer of 3-phase AC technology, Jungheinrich has been perfecting electric lift truck technology for more than 60 years, allowing us to set the standard for high performance.

## Our AC technology in action:

### Advanced Drive System

Rapid acceleration, smooth directional changes, precise speed control and handling are just a few of the advantages of the Jungheinrich EFG C20-C40 models' AC drive system. Individual performance features such as travel speed, acceleration rate and regenerative braking response can all be customized to fit your application requirements, giving you the ultimate control.

### All AC Hydraulic System

Jungheinrich's all AC hydraulic system provides smooth load handling and precise load placements. Hydraulic cushioning is built into the mast staging function to minimize unnecessary shocks to the truck and to the load.

### Enhanced Steering

With both hydraulic and all-electric steering options, more precise control during operations comes with minimal effort. The all-electric steering boasts a new level of accuracy for applications with the highest standards and the lowest margin for error. The compact steering wheel design gives operators more room.





# A Comfortable Shift. From Start To Finish.

## Adjustable Comfort

**Spacious Operator Compartment**  
Combining superior comfort and functionality allows for increased operator efficiency.

**Standard Adjustable Seat**  
The full-suspension vinyl seat can be easily adjusted to suit operators' unique preferences.

**Optional Fingertip Controls**  
Boost your operator comfort and productivity by adding the optional fingertip controls – with an integrated horn button for added security.



## Excellent Operator Awareness

- Vibrant 4-inch, LED full-color display provides vital information
- The precisely-engineered overhead guard offers optimized visibility while racking or stacking.



The display includes options such as: travel direction, optional load weight, battery discharge warning icons, and more.





# Intelligent Warehouse Solutions.

## Smart Technology

The EFG C20-C40 models are equipped with top-of-the-line technology to keep your operators productive and secure.

- **Adaptable Performance Modes** - optimize your performance and efficiency by selecting one of the pre-set operating modes.
- **Operator Presence System** - This integrated, computer-based feedback system uses both audible and visual indicators to alert the operator, and help prevent potentially hazardous situations..
- **Advanced Operator Assistance** - Standard features like curveCONTROL and swayCONTROL are available to help take your operator's productivity and performance to new heights.

## Lithium-Ion Availability

- Greater power efficiency
- Run for 24 hours a day, 7 days a week with opportunity charging
- Zero battery maintenance
- No watering
- No more battery exchanges
- No gas emissions, odor or acidification
- No special charging areas or equipment needed
- Longer lasting life cycles (up to 4,000)
- Up to 8-year warranty on batteries
- Up to 2-year warranty on chargers

\*Ask your local dealer about additional safety accessories and options.

## Security Features

- **Steering wheel or armrest mounted horn**
- **Emergency power disconnect**
- **Automatic parking brake**
- **Two LED front work lights**
- **Optional PIN-code access**
- **Optional additional horn packages**
- **Optional light packages**

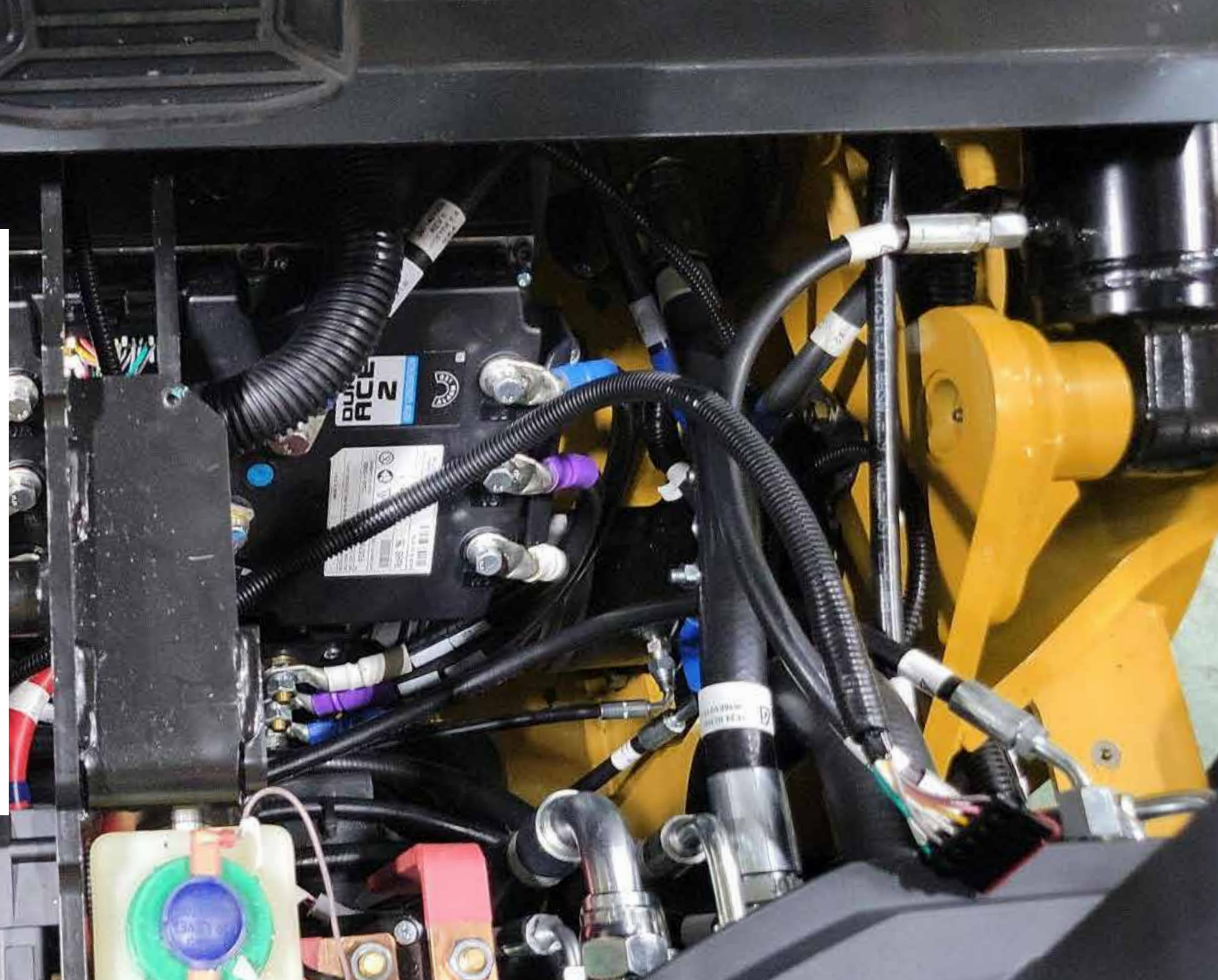
Three point access provides a secure way to get on and off the lift truck.





# Maintenance-Friendly. More Uptime.

With reinforced side panels and easy-to-remove component covers, you have quick access to service the EFG C20-C40. And, with 500-hour service intervals – even up to 1,000-hour intervals on most major components – you can confidently move your business forward.



## 500+ Hour Service Intervals

- Lower overall cost of ownership
- Increased uptime

## Easy Serviceability

- Easy access to key service components
- Display-based maintenance reminders

## Battery extraction methods

- Side Rail Extraction (optional)
- Overhead guard battery extraction



## Reliable And Ergonomic Design

- Cowl design and off-set steering column to help maximize visibility
- Rerouted wiring integrated into the overhead guard – for a streamlined view and an added protection of your investment
- Excellent visibility through the mast and overhead guard







# Options Tailored To Your Application.

Custom-Fit To Your Operation.

**Drive-In Rack Options**

- On a standard truck that is 88" high by 41.5" wide, the 30" narrow section of the OHG is positioned between 50" and 84.5" high on the truck.

**Special Application Packages**

- Freezer package for intermittent use below -20° F
- Optional U.L. type EE rating

**Electronic Back-Up "Smart" Alarm**

- Ideal for freezer and cold applications
- Automatically adjust its volume level to suit the environment
- -20°F to 185°F temperature operating range

**Optional Control Features**

- Foot direction control
- Auto tilt centering
- Fingertip control seat-mounted armrest
- Mini steering armrest
- Single or dual joystick armrest
- Rear grab handle with horn button

**Variety Of Light Packages**

These models can be customized with blue spot lights, strobe lights and more.

- USB port
- Side rear view mirrors
- Fire extinguisher
- Electronic backup "smart" alarm
- Rear LED working lights
- LED combo lights
- Strobe lights (Amber , Blue)
- Red curtain lights



# WHO IS Jungheinrich?

## THE LEADING ELECTRIC LIFT TRUCK MANUFACTURER

### **Our name may sound strange – JUNGHEINRICH.**

But it's a name you should know. We're the world's leading brand of electric lift trucks. While others are new to electric, our 5<sup>th</sup> generation technology and more than 60 years of electric lift truck design experience allow us to deliver two shifts on one charge – guaranteed – for greater productivity.

### **Strong Local Support And Expertise.**

- » 340+ dealer locations throughout the US, Canada and Mexico
- » 24-hour parts delivery guarantee
- » Industry's only 1,000-hour service intervals

### **Run 2 Shifts on 1 Battery Charge – Guaranteed on select models**

Never stop a shift to charge, and take your operations to a higher level.

- » Guaranteed to run 16 hours on a single battery charge
- » No interim charging
- » No battery changing
- » No additional battery needed
- » Offered on several Jungheinrich models





